

Preserving North Carolina Legacy Geologic and Topographic Maps – Geologic map coverage by scale

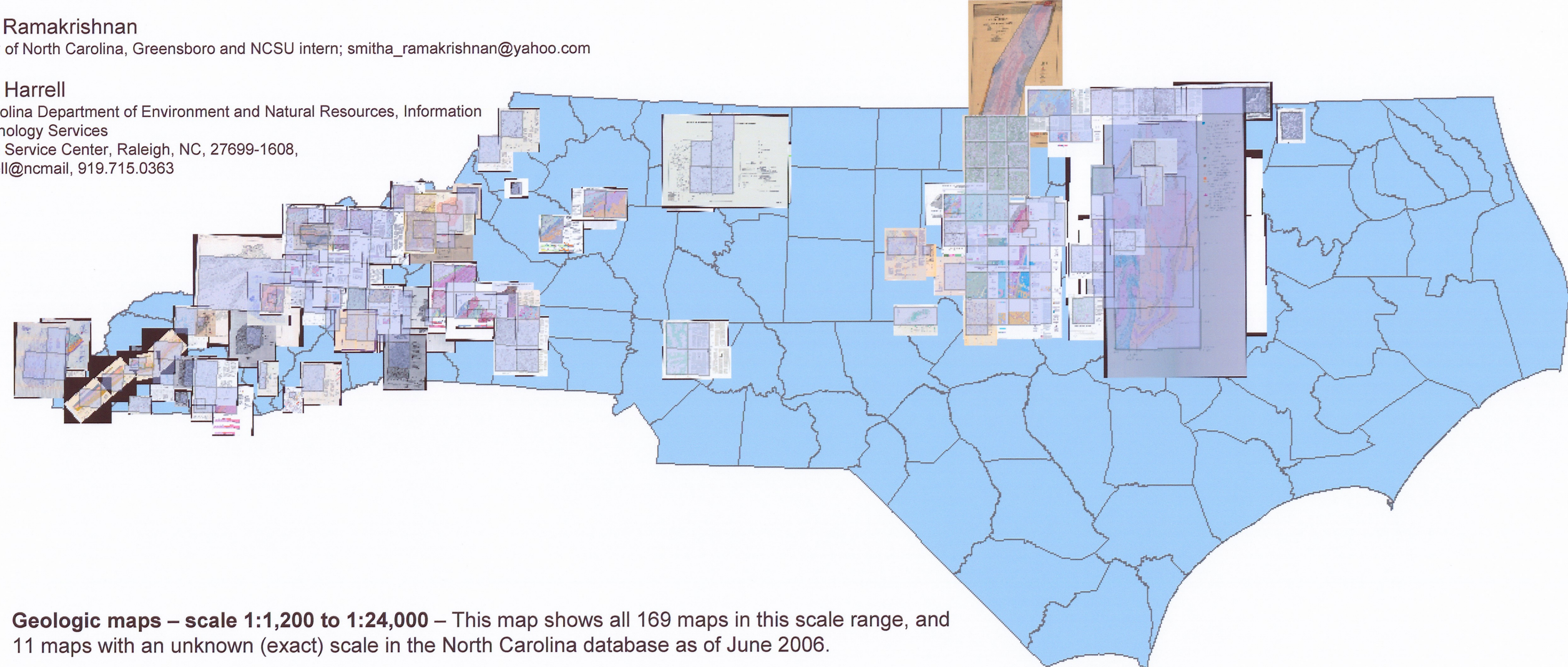
Jeffrey C. Reid
 North Carolina Geological Survey, 1612 Mail Service Center, Raleigh, NC 27699-1612
 Author contact: jeff.reid@ncmail.net; 919.733.2423 –www.geology.enr.state.nc.us

Jefferson F. Essic
 Data Services Librarian, North Carolina State University, D.H. Hill Library, Research & Information Services
 Dept., Box 7111, Raleigh, NC 27695-7111, jeff_essic@ncsu.edu, 919.515.5698

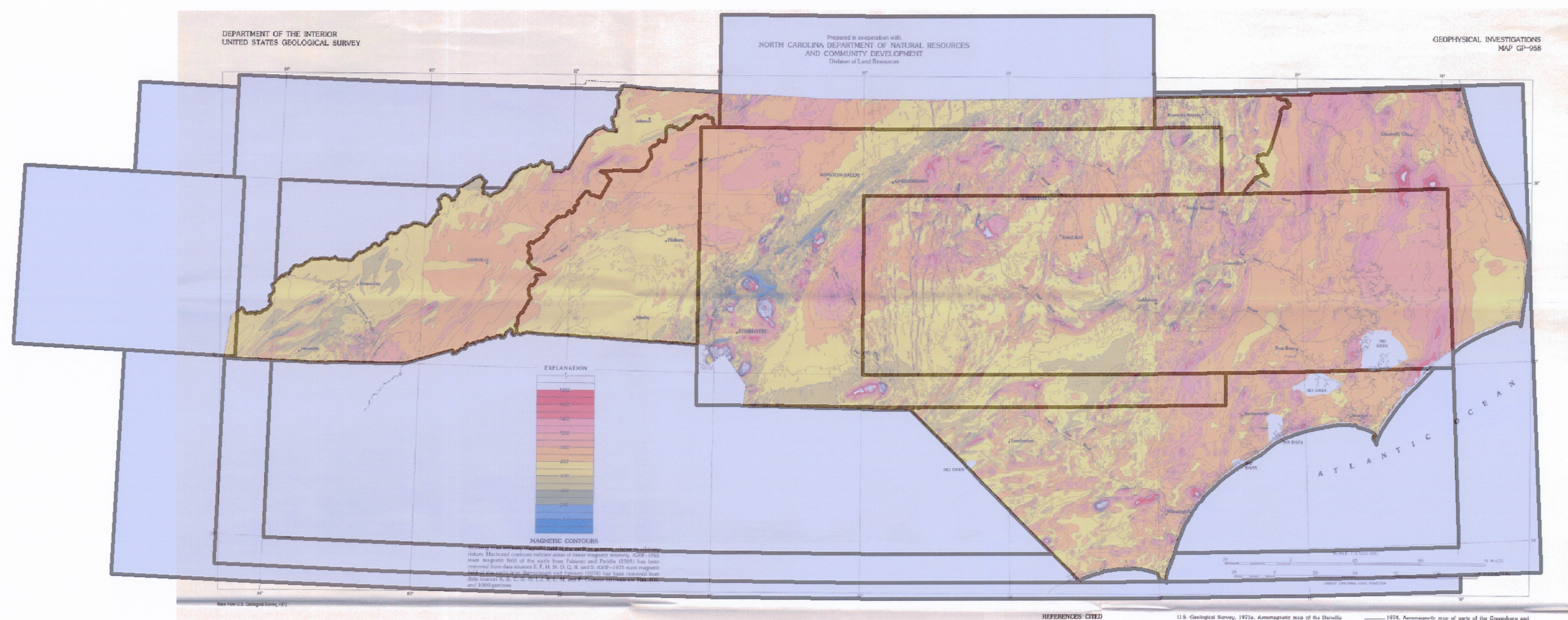
Steven P. Morris
 North Carolina State University, D.H. Hill Library, Research & Information Services Dept., Box 7111, Raleigh,
 NC 27695-7111, steven_morris@ncsu.edu, 919.515.1361

Smitha Ramakrishnan
 University of North Carolina, Greensboro and NCSU intern; smitha_ramakrishnan@yahoo.com

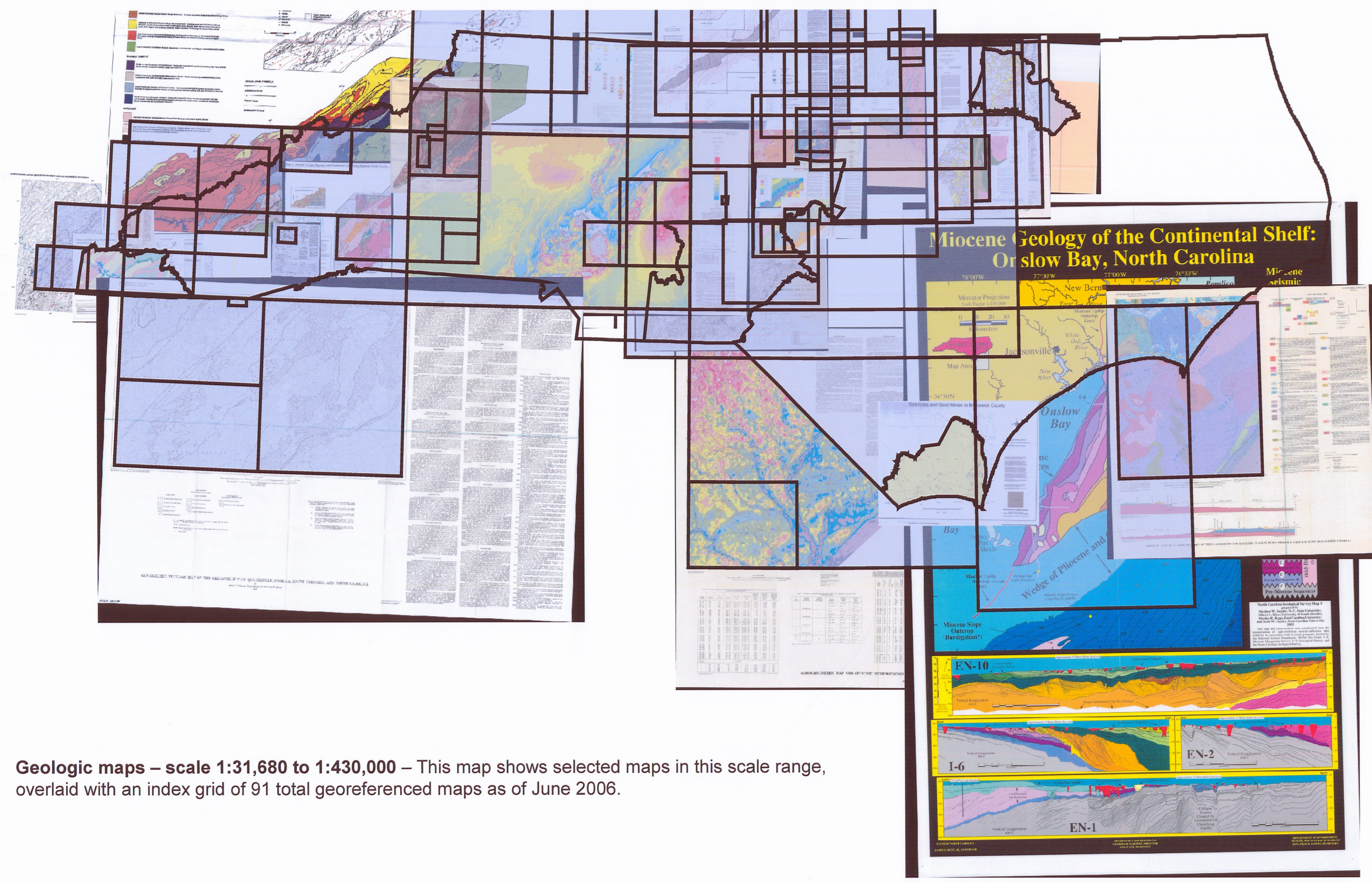
Julia L. Harrell
 North Carolina Department of Environment and Natural Resources, Information
 and Technology Services
 1608 Mail Service Center, Raleigh, NC, 27699-1608,
 julia.harrell@ncmail, 919.715.0363



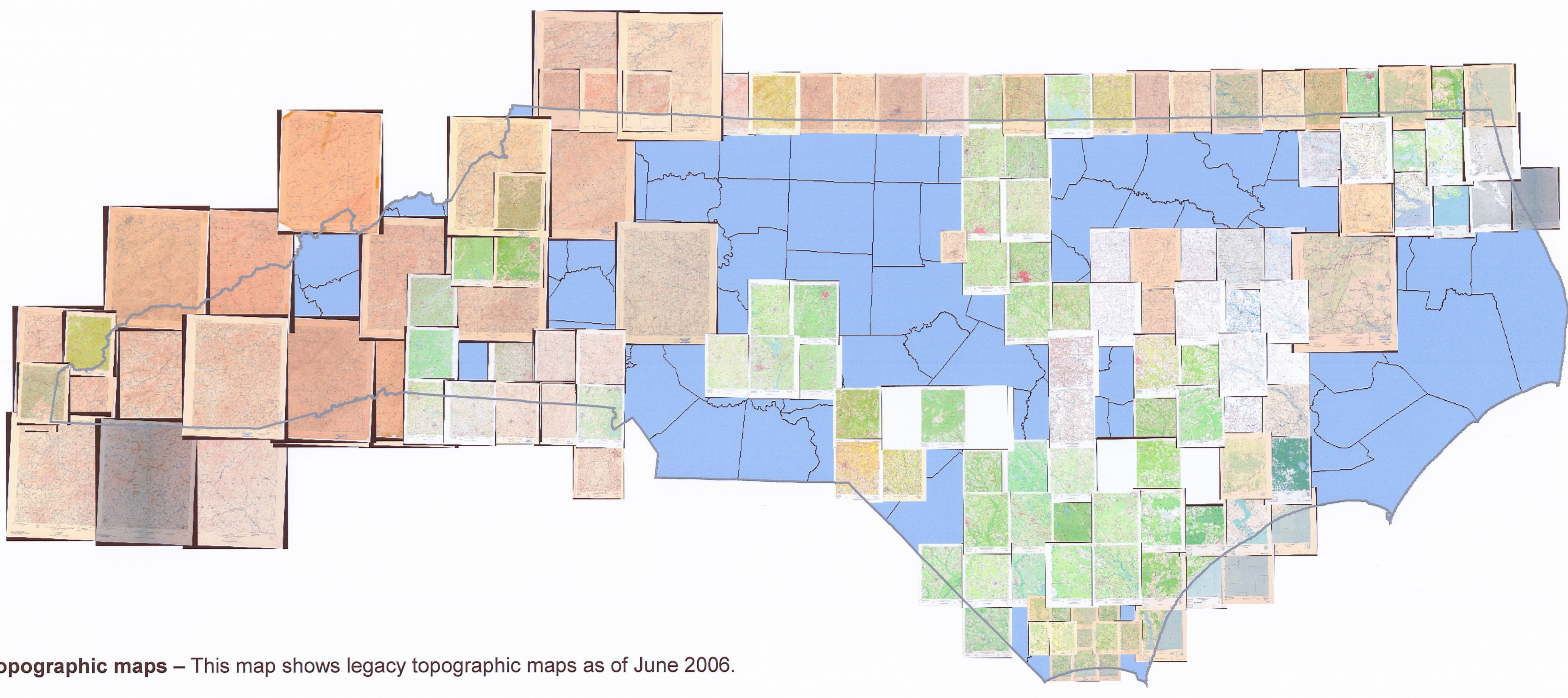
Geologic maps – scale 1:1,200 to 1:24,000 – This map shows all 169 maps in this scale range, and 11 maps with an unknown (exact) scale in the North Carolina database as of June 2006.



Geologic maps – scale 1:500,000 to 1:2,500,000 – This map shows selected maps in this scale range, overlaid with an index grid of 13 total georeferenced maps as of June 2006.



Geologic maps – scale 1:31,680 to 1:430,000 – This map shows selected maps in this scale range, overlaid with an index grid of 91 total georeferenced maps as of June 2006.



Topographic maps – This map shows legacy topographic maps as of June 2006.

