

# DIGITAL MAPPING TECHNIQUES 2014

The following was presented at DMT'14  
(June 1-4, 2014 - Delaware Geological Survey,  
Newark, DE)

The contents of this document are provisional

See Presentations and Proceedings  
from the DMT Meetings (1997-2014)

<http://ngmdb.usgs.gov/info/dmt/>

# Transitioning to the FGDC Draft Geological Map Database Standard: a Washington State Geologic Survey Pilot Project

Meredith C Payne  
Anne C Olson  
Dave K Norman  
Dave Jeschke



# Motivation

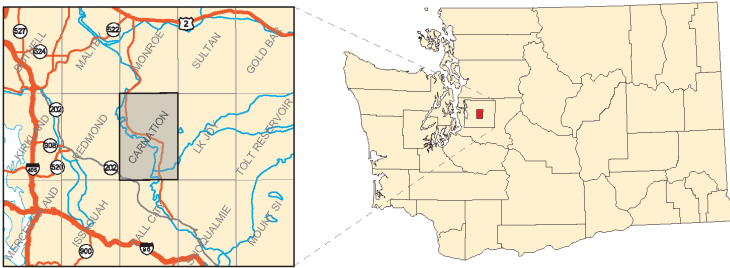
- ❖ Data and metadata consistency
- ❖ Geologic Relationships
- ❖ Data Lineage
- ❖ Data sharing (NGMDB)
- ❖ Increased efficiency
- ❖ Improved products and services for users
  - ❖ Science community
  - ❖ Public information

# Project

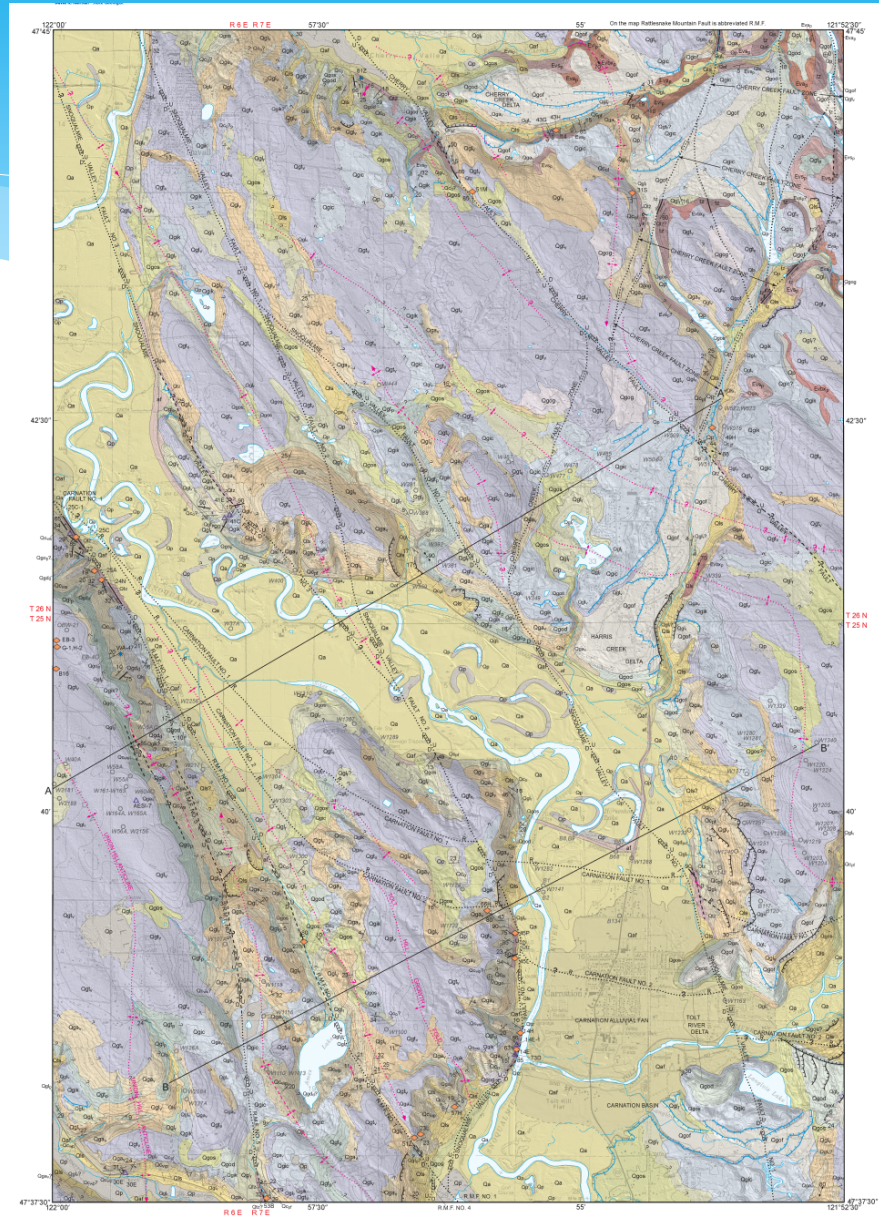
- ❖ NSDI CAP-funded project (2012)
- ❖ Convert one DNR legacy 24K quadrangle to NCGMP09 schema
  - ❖ Document transitional process in a cookbook form
  - ❖ Document general experiences (concerns, challenges, etc.) for NCGMP09 developers
  - ❖ Make these deliverables freely available to the public
- ❖ Deliverables in ArcGIS 10.1, Python 2.7.x
- ❖ Project website:  
<https://sites.google.com/site/wadnrncgmp09/>



# Pilot Project: Carnation 7.5-minute Quadrangle, WA



- ❖ Polygons: map units, water
- ❖ Lines: contacts, faults, folds, hydrology, cross sections
- ❖ Points: strikes/dips, geochronology/geochemistry, significant observation sites, wells

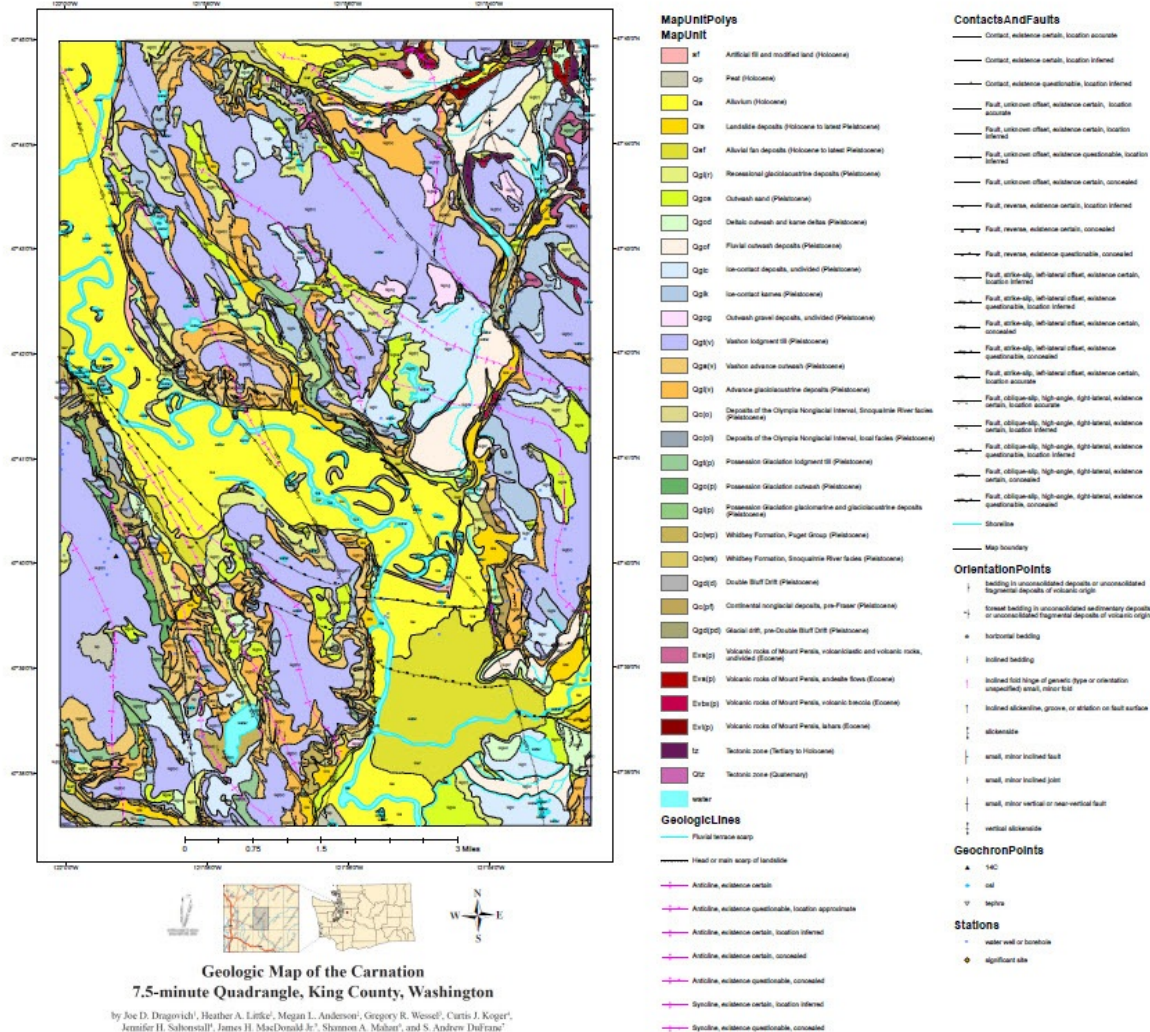






# Result: Carnation Map, NCGMP09 version

NCGMP09 version of the Geologic Map of the Carnation 7.5-minute Quadrangle



# Legacy vs. New maps in NCGMP09

- ❖ Issues associated with legacy map conversion:
  - ❖ Quantitative vs. Qualitative values (esp. locational accuracy attributes)
  - ❖ Missing information, vague definitions
  - ❖ Does -9 as an unknown/unavailable value give the impression of poor quality mapping?
  - ❖ Representation of strange symbology and area overlays
- ❖ NCGMP09 lite? How much is enough for compliance?
- ❖ New maps can be planned with the NCGMP09 structure in mind.



# Concerns

- ❖ DescriptionOfMapUnits
  - ❖ HierarchyKey, ParagraphStyle
- ❖ Feasibility of Computer Administrator Privileges
- ❖ Reliance on FGDC-STD-013-2006 symbology
  - ❖ sufficiency for complex Tertiary and Quaternary geology
  - ❖ potential future changes to symbol standard?

# GeneralLithology—the Elephant in the room

- ❖ GeneralLithology: is something better than nothing?
  - ❖ Geologists apparently can't decide
  - ❖ Sensitivity to data manager (3rd party) decision making (esp. in the case of legacy data conversion)
- ❖ How else to devise a set of queryable lithology terms?

# NCGMP09 requires change to current mapping methods

(particular to WA DNR, but potentially analogous to other agencies)

- ❖ LocationConfidenceMeters and other quantitative confidence measures
- ❖ Schema requires consistency
- ❖ Non-unique code issues
- ❖ Need to detangle or consolidate feature classes (for example, folds and scarps, contacts and faults)
- ❖ Parsing of attributes into individual NCGMP09 fields
- ❖ Keeping Notes and Commentary under control (and limited to appropriate fields!)
- ❖ Normalized vs. Denormalized

# Another two Elephants

❖ TIME & MONEY



# Website as a growing resource?

Washington State  
Division of Geology and  
Earth Resources  
NCGMP09 Migration  
Pilot Project

Search this site


▼ Project Home  
Links  
Project Participants  
Project Documents and Deliverables  
Sitemap

**NCGMP09 and Washington State Geology**

This website hosts the deliverables from the National Spatial Data Infrastructure (NSDI) Cooperative Agreements Program (CAP) grant received by the Washington State Division of Geology and Earth Resources (DGER).

[Project Home](#) >  
**Links**

- [USGS NCGMP09 site](#): Official Website of NCGMP09
- [USGS Open File Report 2010-1335](#): Document detailing v 1.1 of NCGMP09
- [FGDC STD-013-2006](#): FGDC Digital Cartographic Standard for Geologic Map Symbolization
- [Ryan Clark's NCGMP09 Site](#): HTML version of NCGMP09 v 1.1 Document and Tools

 Add files

# Thank you!

- ❖ Sincere thanks to Julie Binder-Maitre, Gita Urban-Mathieux (FGDC); Ralph Haugerud, Dave Soller (USGS); Ryan Clark, Janel Day (formerly AZGS).
- ❖ Project Website -- <https://sites.google.com/site/wadnrncgmp09/>

❖ Questions?