

DIGITAL MAPPING TECHNIQUES 2014

The following was presented at DMT'14
(June 1-4, 2014 - Delaware Geological Survey,
Newark, DE)

The contents of this document are provisional

See Presentations and Proceedings
from the DMT Meetings (1997-2014)

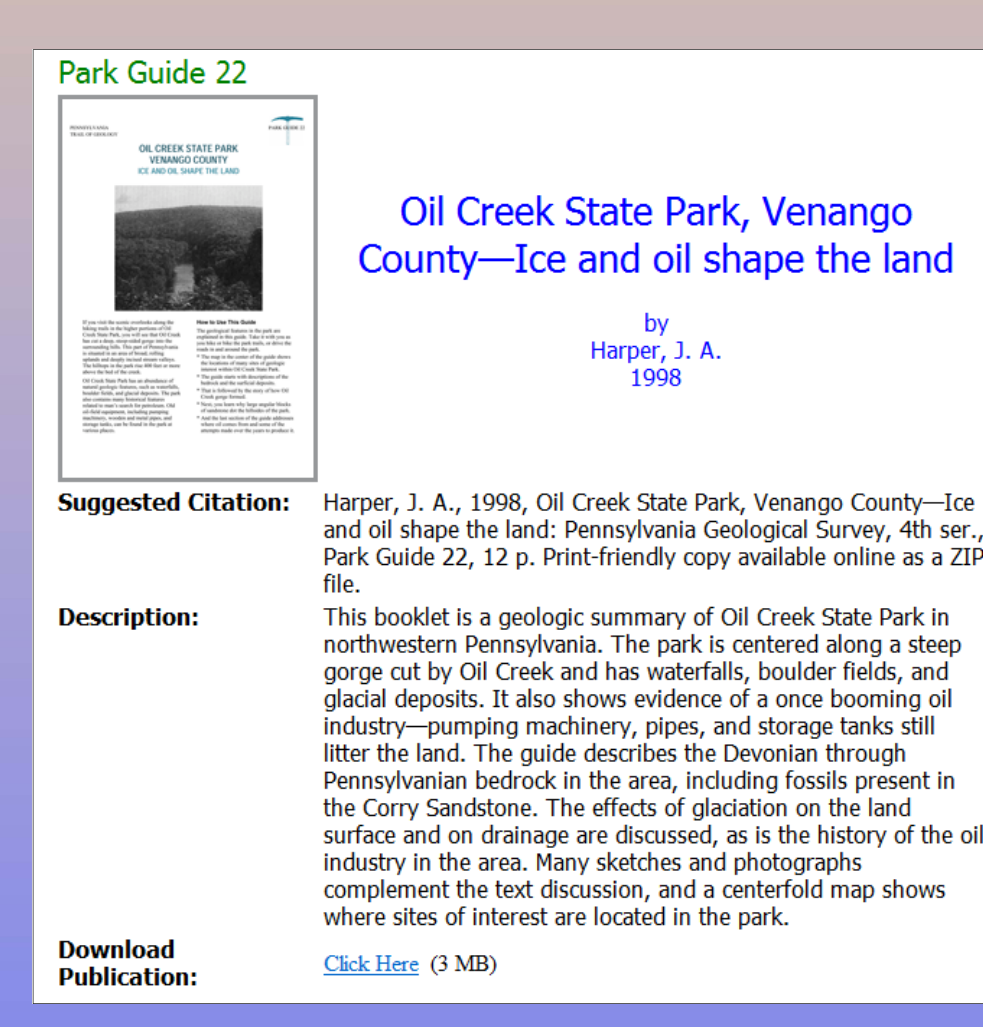
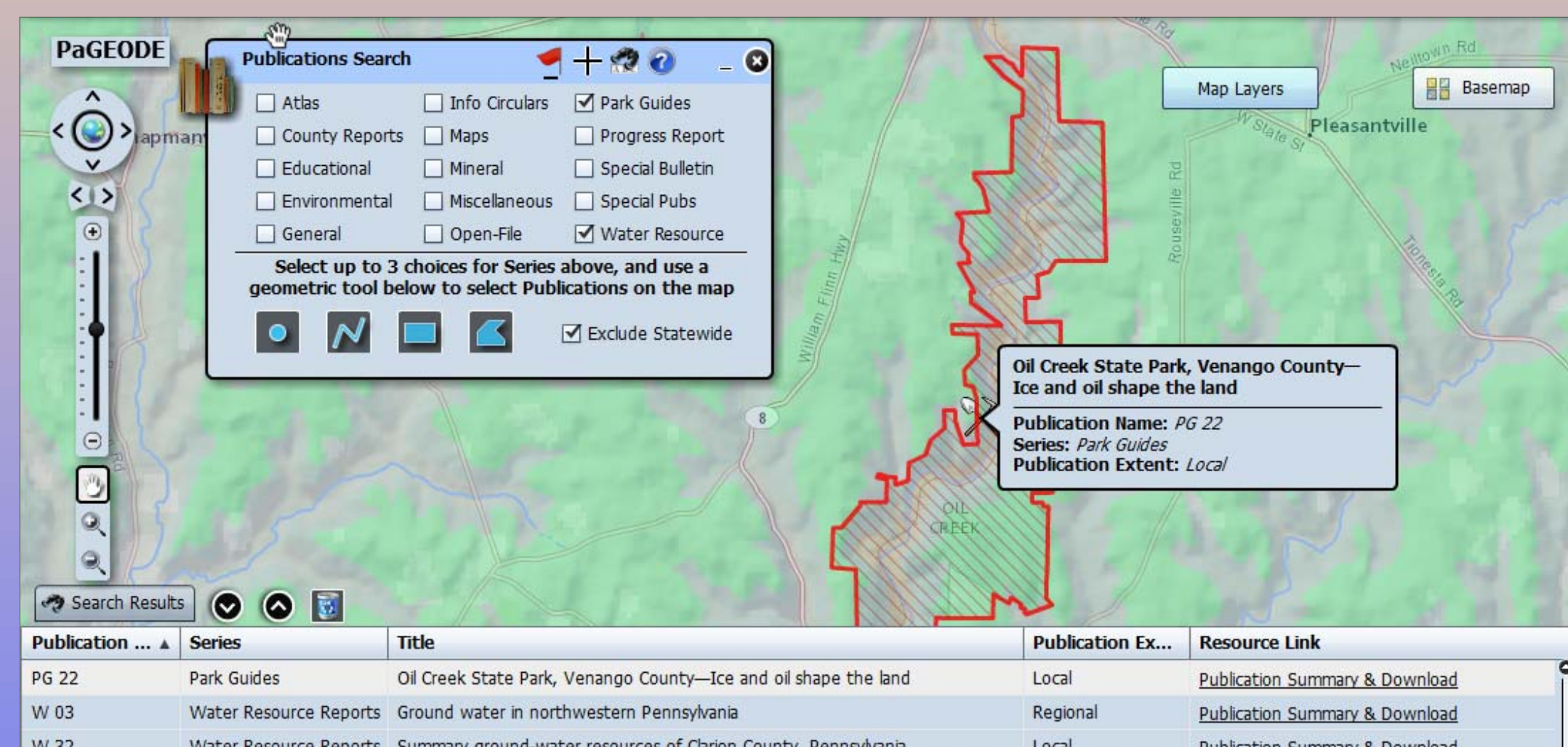
<http://ngmdb.usgs.gov/info/dmt/>



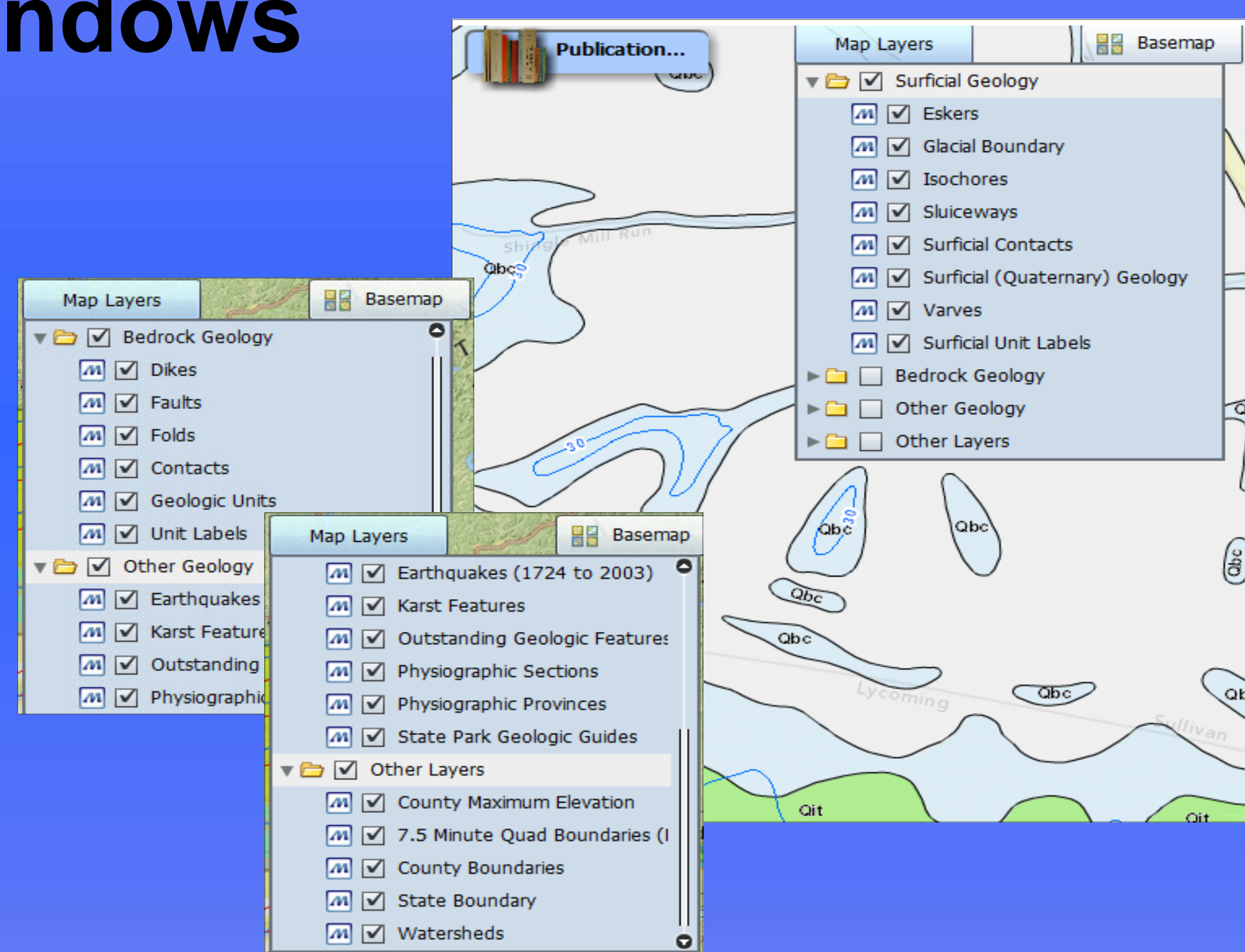
Introducing PaGEODE

Pennsylvania GEOlogic Data Exploration

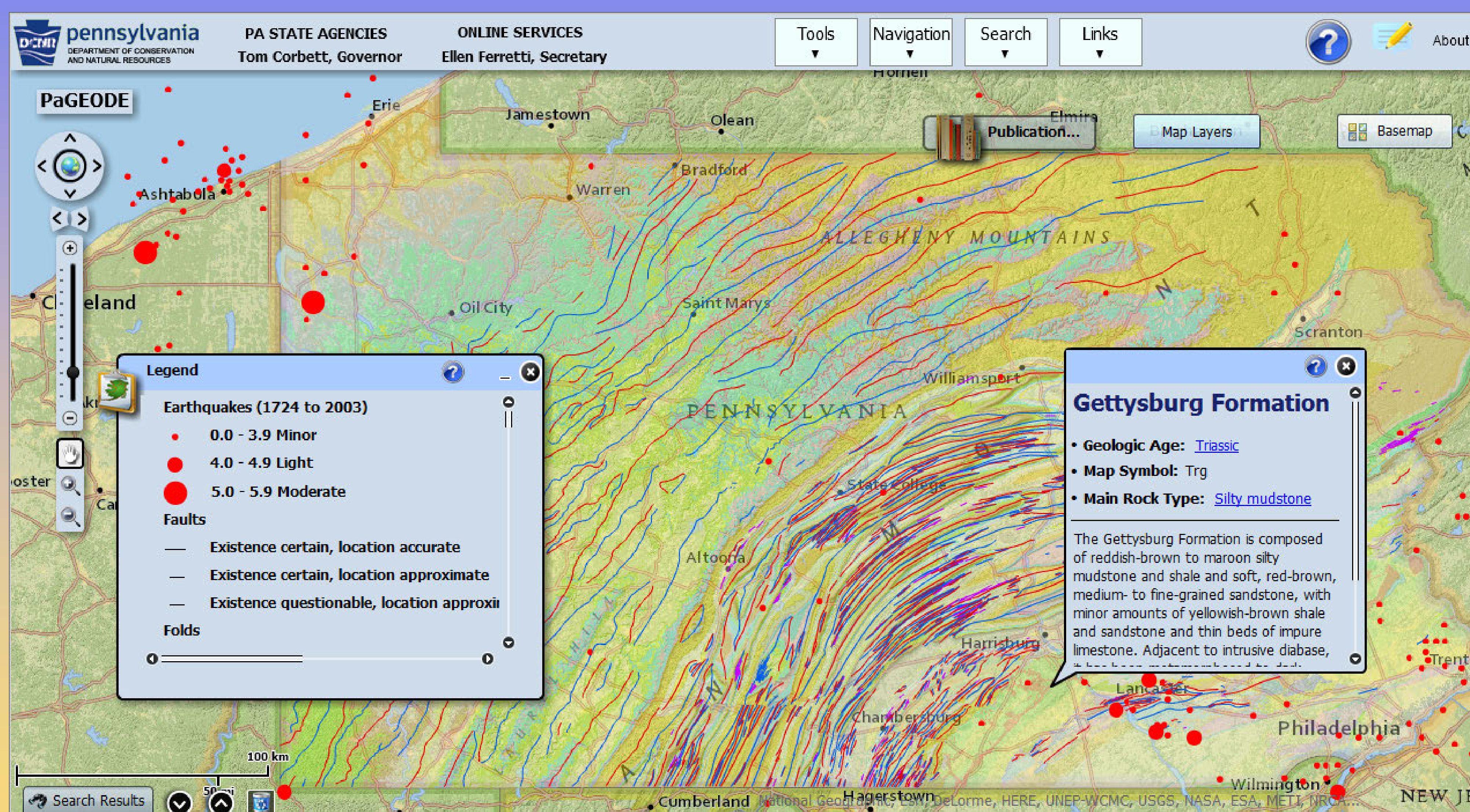
YOUR GEOGRAPHIC PORTAL TO PENNSYLVANIA GEOLOGY



- ◆ Search and Select From Nearly 800 Publications
- ◆ Read Report Summaries Before Downloading
- ◆ Descriptions in Pop-Up Windows
- ◆ Pick Map Layers
 - Surficial Geology
 - Bedrock Geology
 - Thematic Geology
 - Relevant Boundaries
- ◆ View and Export GIS Data

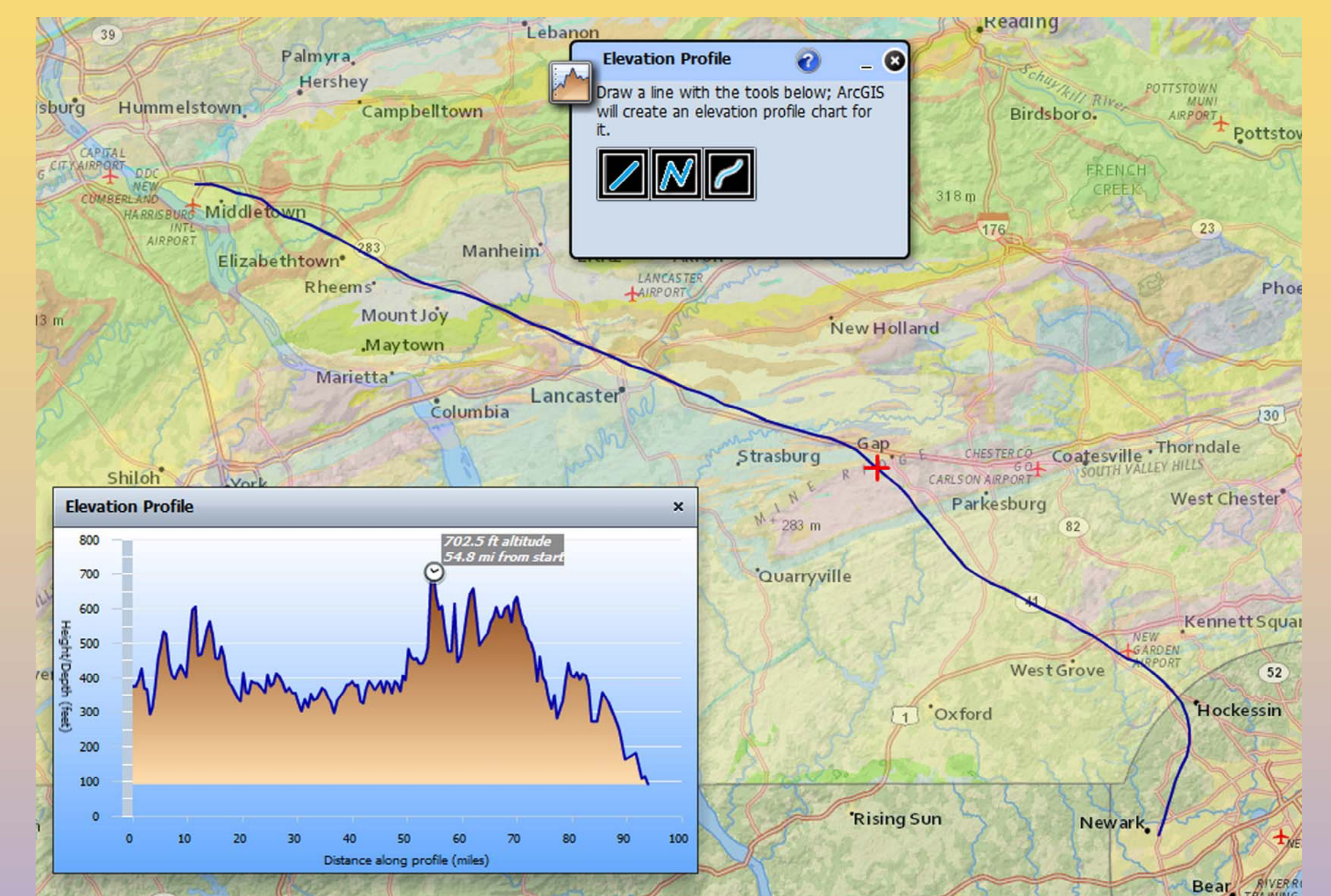
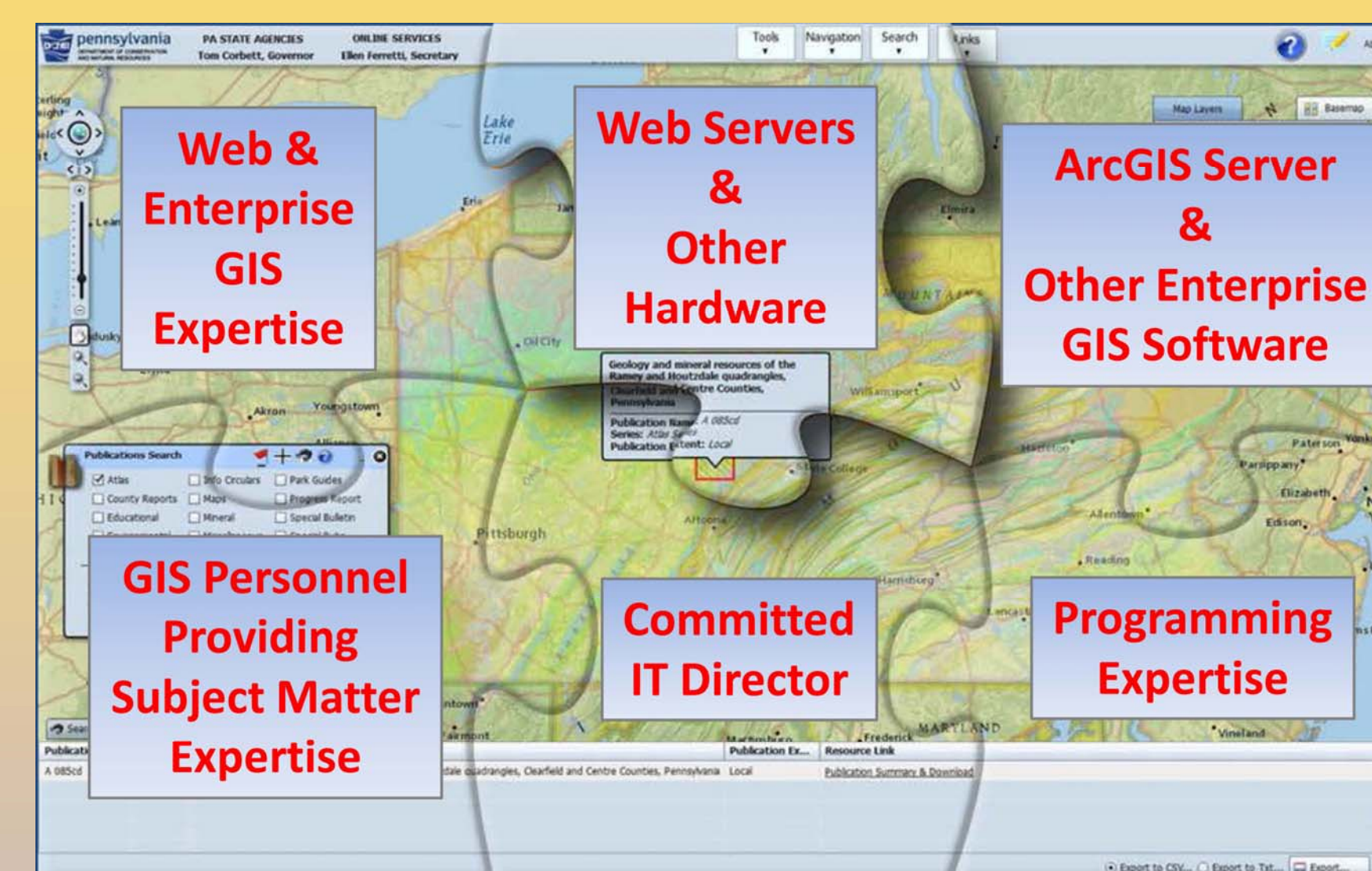


Take a test drive today or ask for a demo



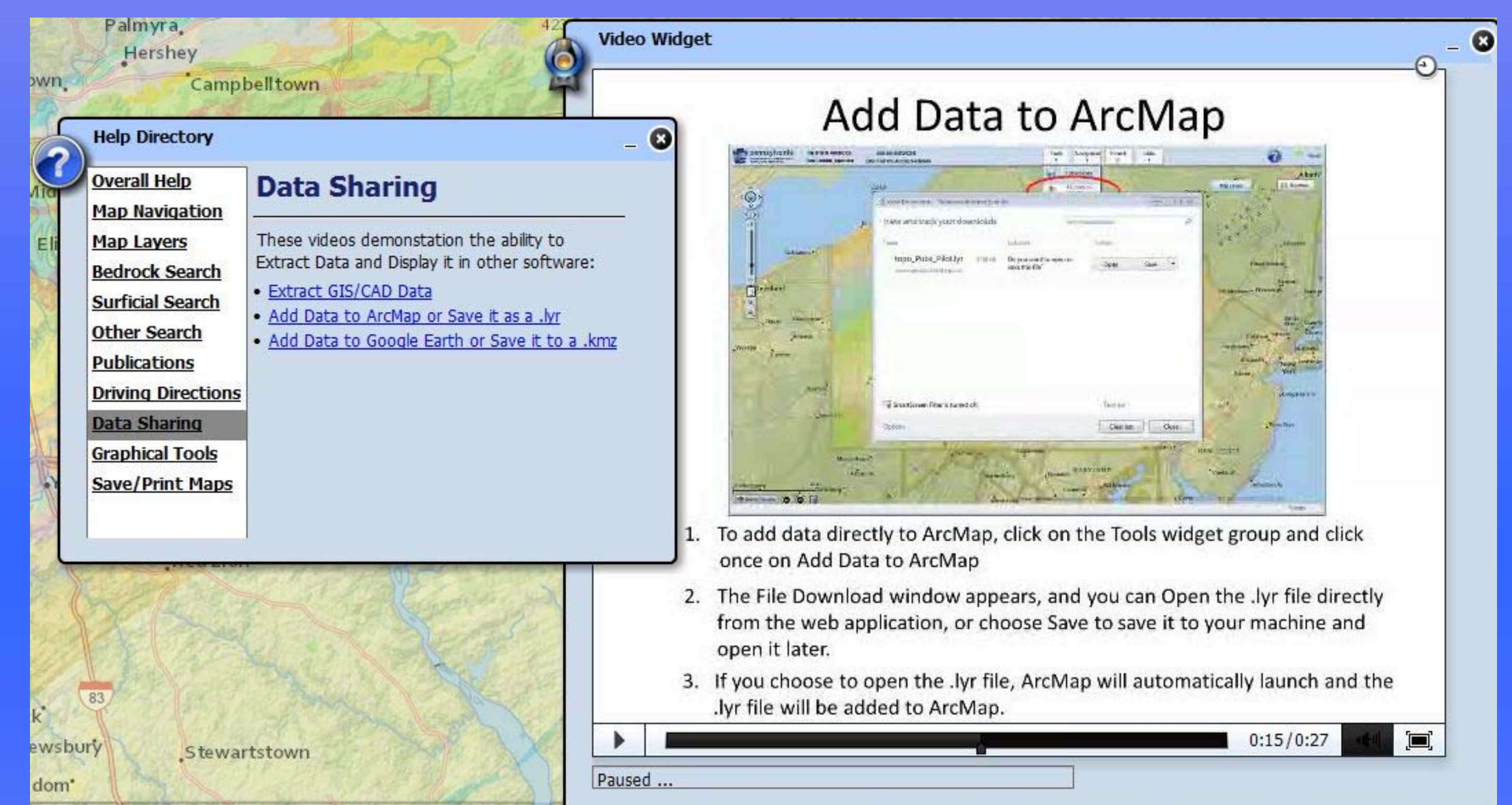
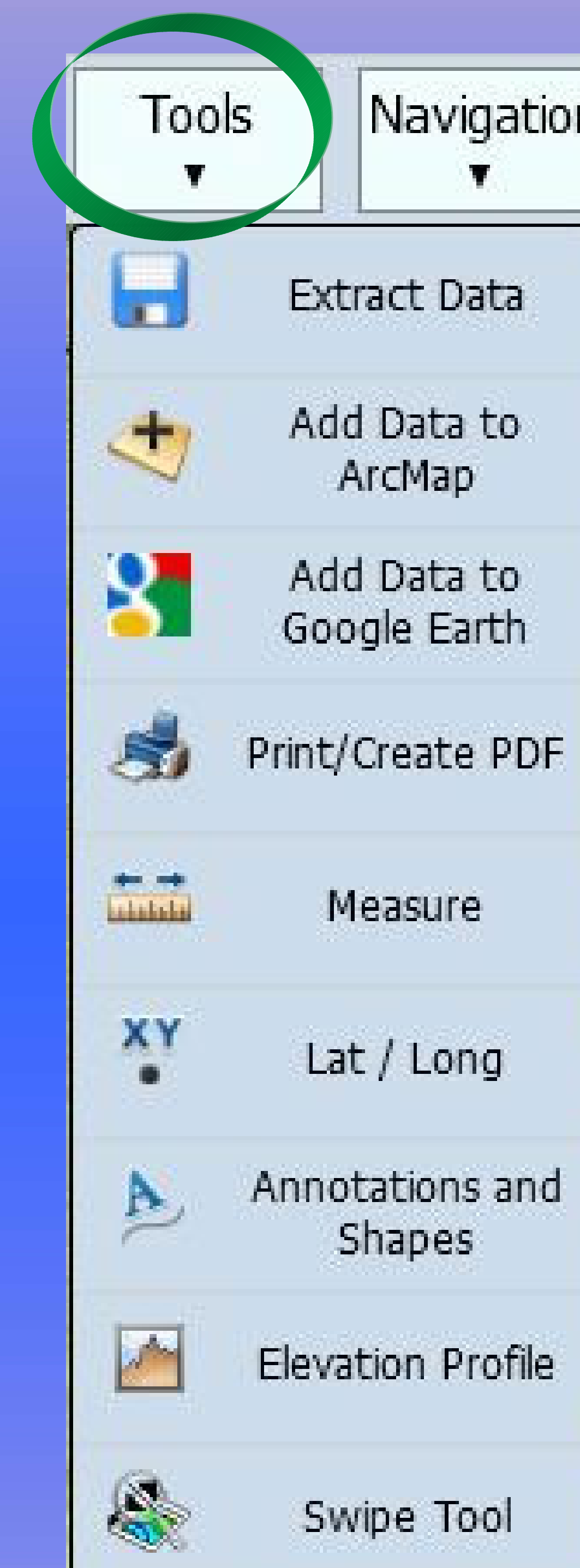
Visit www.gis.dcnr.state.pa.us/geology and check for new gems of geologic data

How We Got Here

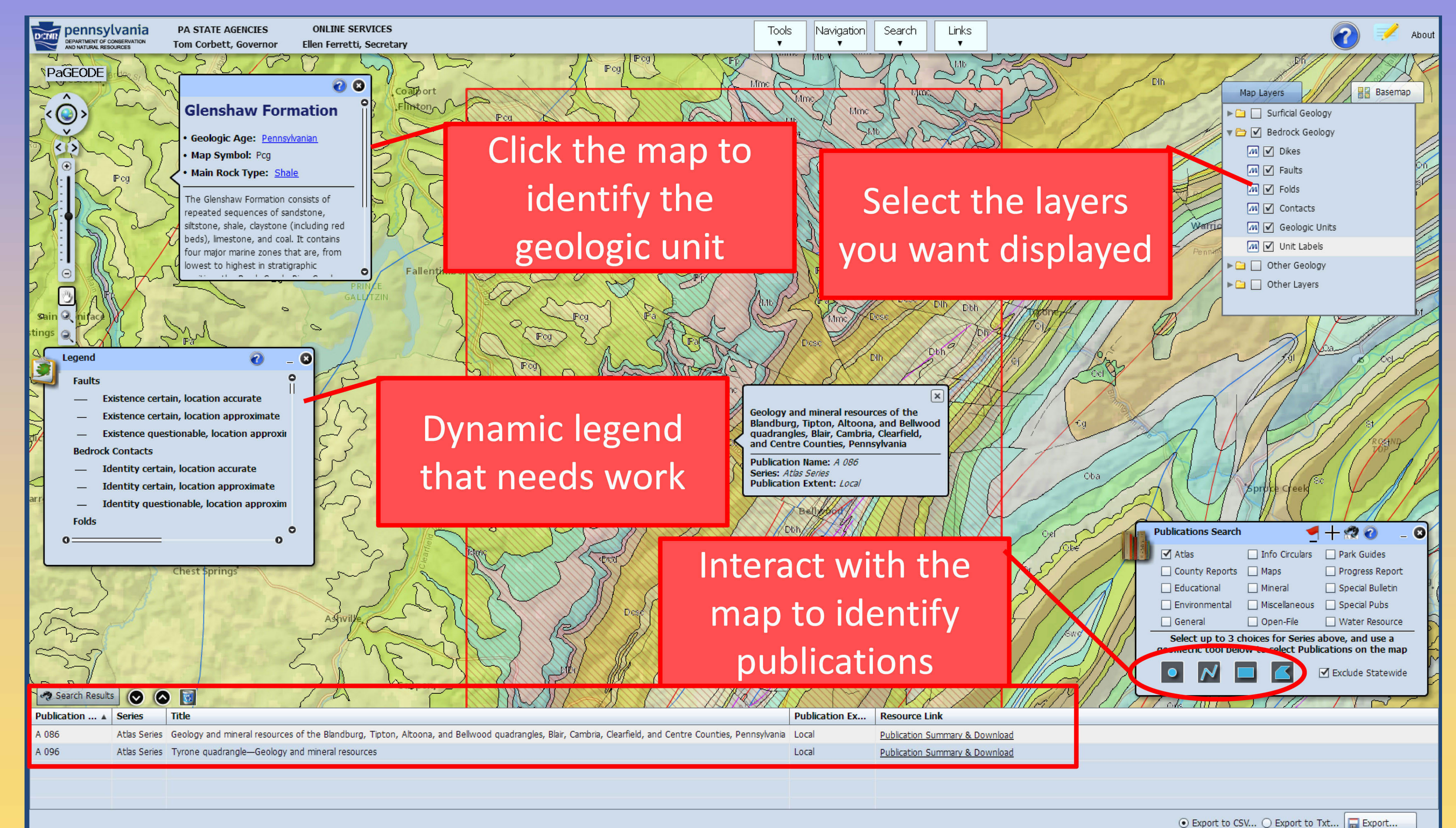


All the Pieces Came Together

Profile from Office to DMT Meeting



Videos Demonstrate the Use of Widgets and Tools



PaGEODE — A Work in Progress