

DIGITAL MAPPING TECHNIQUES 2014

The following was presented at DMT'14
(June 1-4, 2014 - Delaware Geological Survey,
Newark, DE)

The contents of this document are provisional

See Presentations and Proceedings
from the DMT Meetings (1997-2014)

<http://ngmdb.usgs.gov/info/dmt/>

The US Topo 2014

Program Updates and Research

National Geospatial Program Office

National Geospatial Technical Operations Center

Kristin Fishburn

June 2014

Agenda

US Topo background, content, schedule

Future enhancements / ongoing research

Workflow

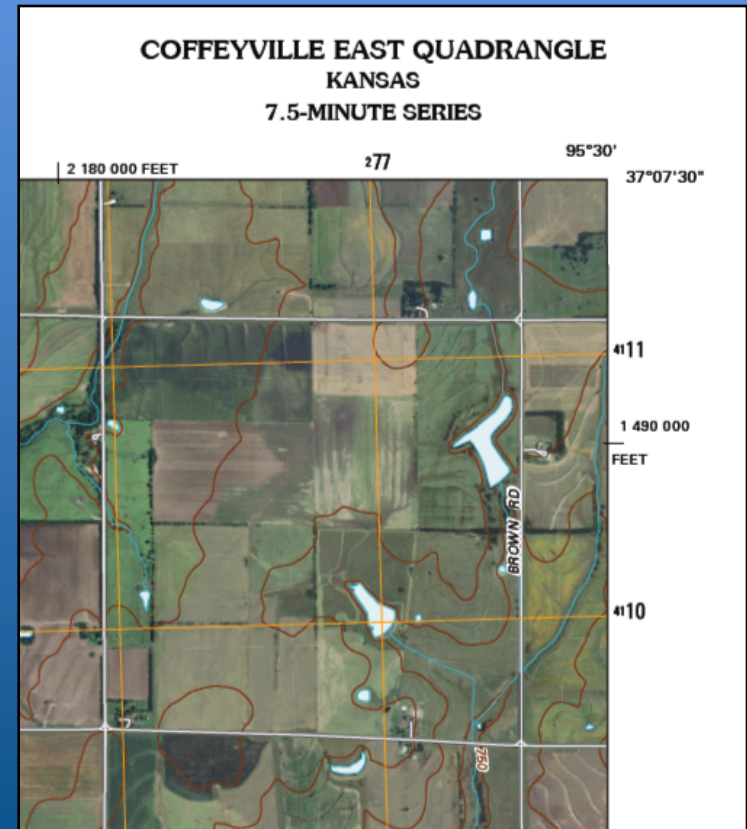
Change Detection

GIS Packets (map packets)

Background

Digital USGS Topographic Map Product

- Modeled on standard 7.5-min quads
- Layered GeoPDF®
- Orthoimage base
- Core feature layers
- 3-year production cycle
- Download free on the Web



Content

2009, 2010, 2011, 2012, 2013, 2014 Feature Content

Ortho-rectified Aerial Imagery

Roads

Names

Elevation Contours

Hydrography

State/County/USFS

Boundaries

Runways

Woodland

Railroads

PLSS

Fire Stations

Hospitals

Schools

Military Boundaries

Cemeteries

Post Offices

Shaded Relief

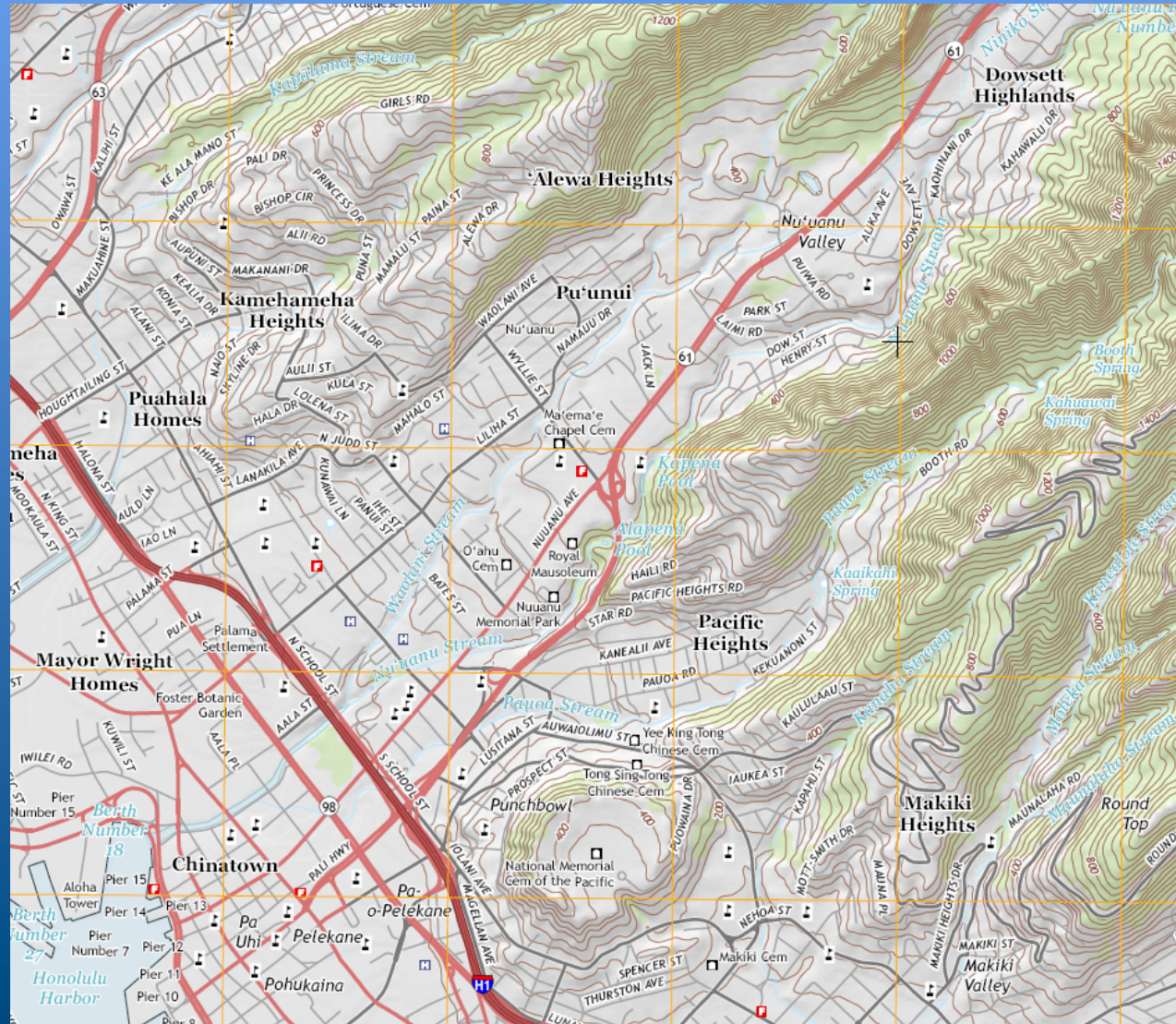
Trails

FWS Boundaries

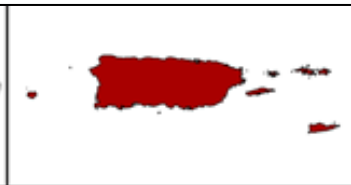
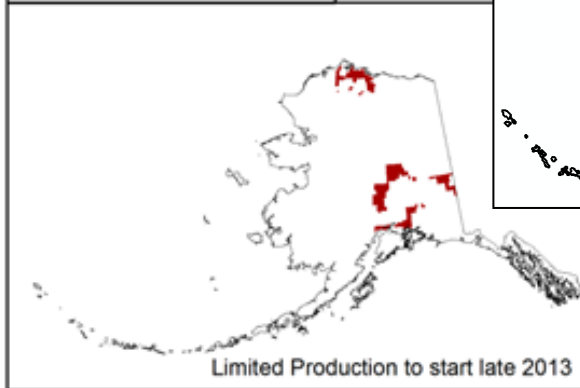
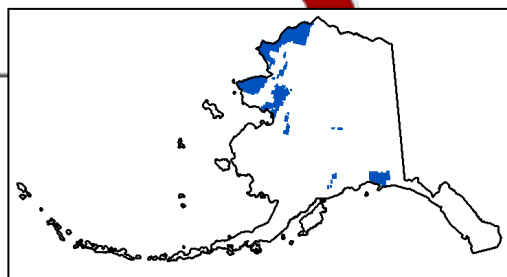
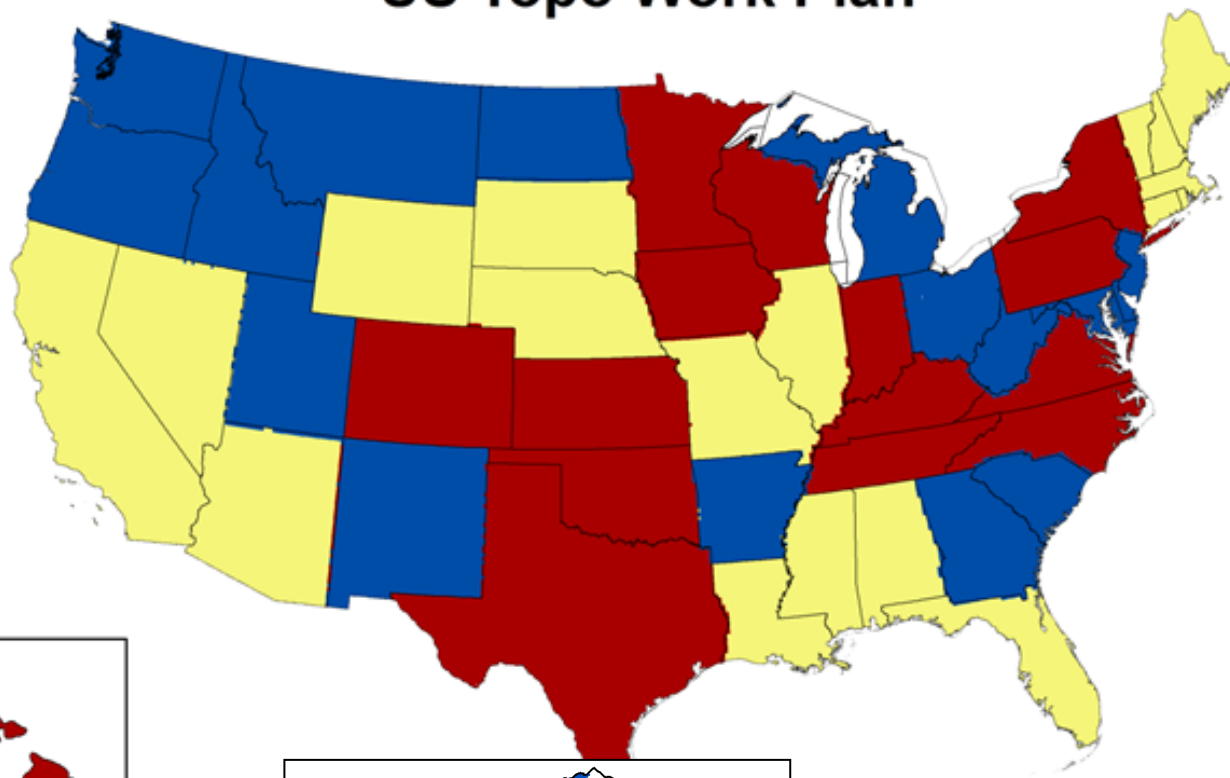
State Capitals

Police Stations

Correctional Facilities



US Topo Work Plan



- Update in 2013
- Update in 2014
- Update in 2015

Future Enhancements....ongoing research

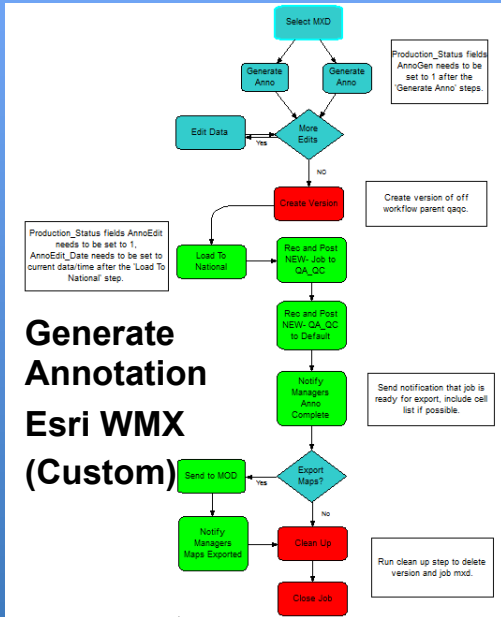
- Pacific Territories
- 100,000-scale product
- Custom extents
- Custom layers
- Ancillary mxd/layer files
- Dynamic Grids
- Dynamic Labeling
- Custom labeling templates
- Streamlined Workflows
- Change Detection
- US Topo GIS Packet
- New content
 - Census Roads
 - Ambulance Services
 - Wetlands
 - Control points / spot elevations
 - Bathymetry
 - NPS boundaries
 - BLM boundaries
 - BIA boundaries
 - National cemetery boundaries
 - Raster land cover / urban layer

US Topo Workflow

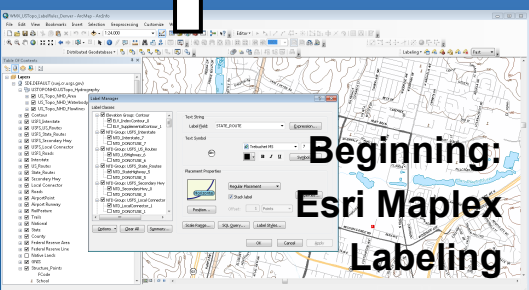
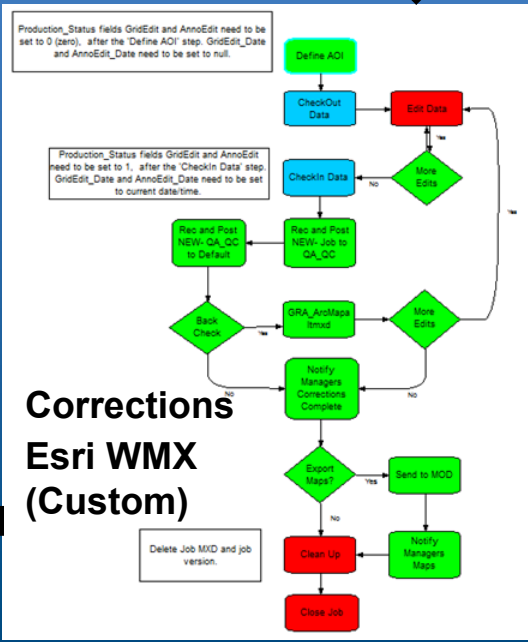
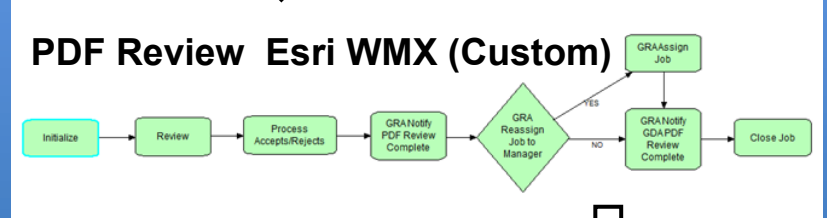
MOD:

Esri, TerraGo, Custom

Export and Assemble



PDF Review Esri WMX (Custom)



Beginning: Esri Maplex Labeling

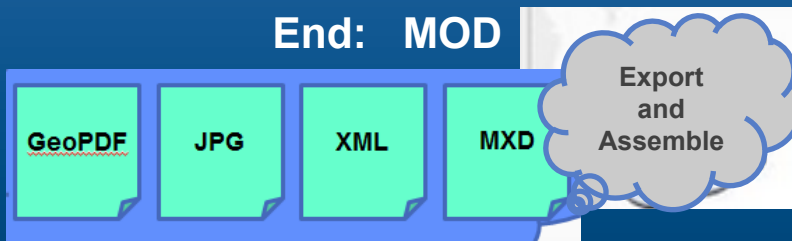
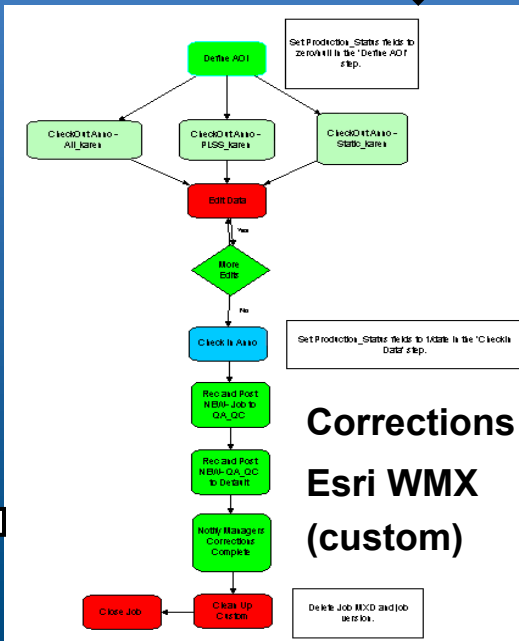
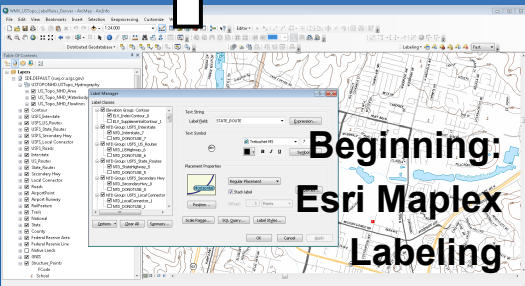
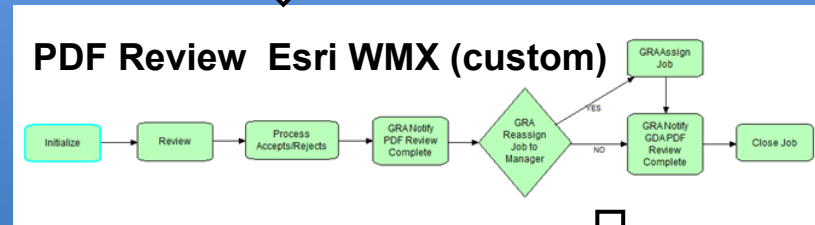
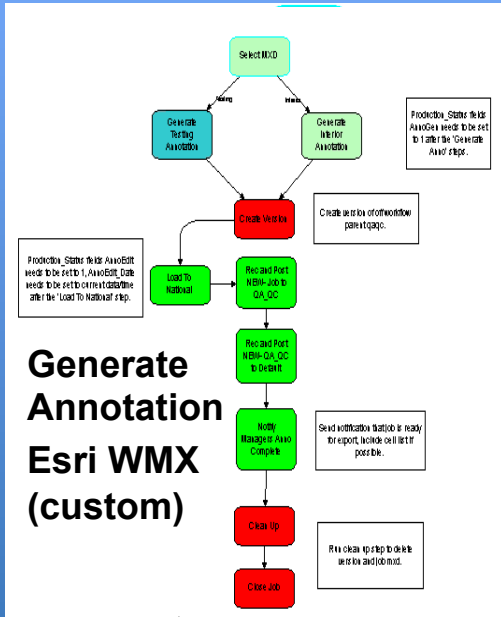
End: MOD



US Topo Workflow

MOD:

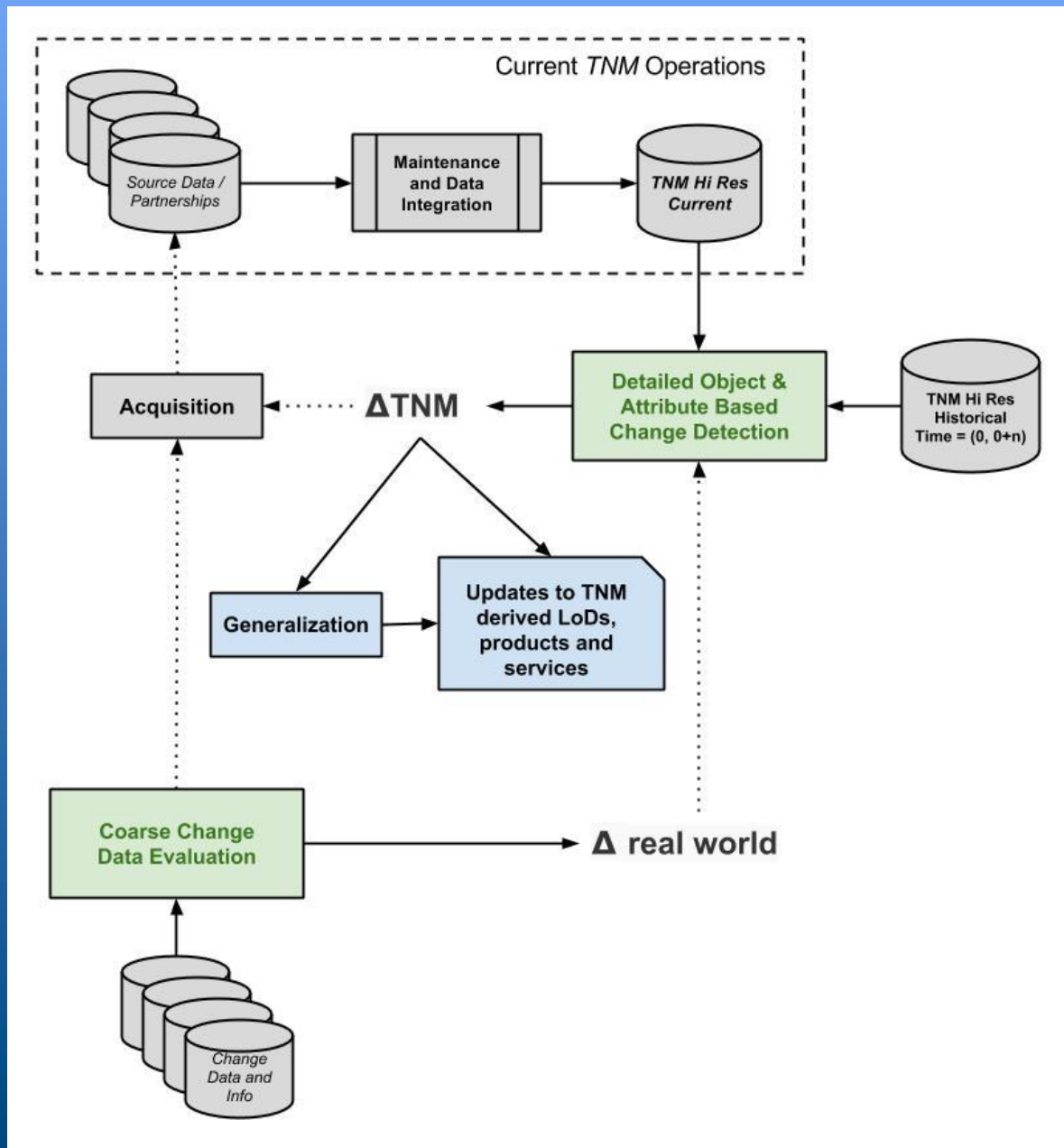
Esri, TerraGo, Custom



End: MOD

Change Detection

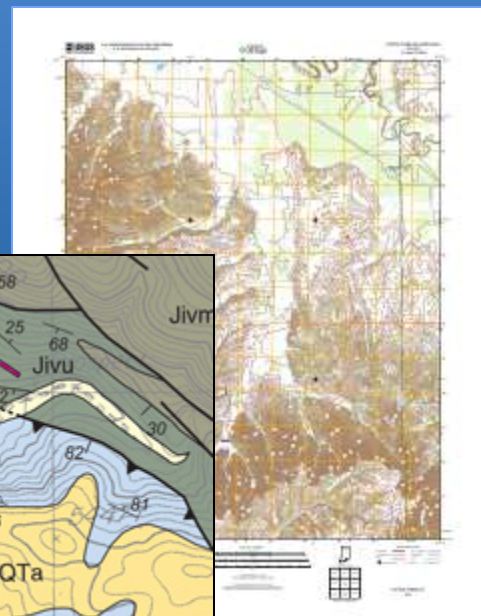
Goal:
Reduce
maintenance
resources



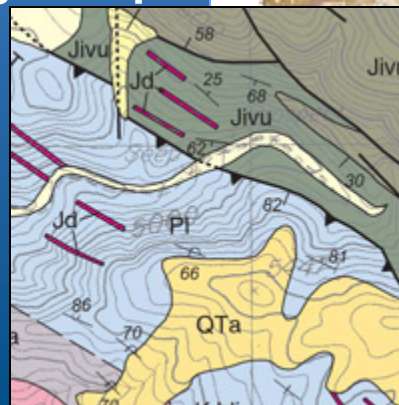
US Topo GIS Packet

- Goal: Use US Topo as base map input for Geologic mapping
- Requirement: Deliver the US Topo distributable layers to the Geologic Mapping Community that can be readily ingested into an ArcGIS system
 - US Topo distributable layers: **Transportation**, Boundaries, Contours, Hydrography, Structures, Woodland, Annotation
- Map packet content
 - Metadata
 - Vector data
 - Annotation
 - ArcMap document
 - Layout
 - Map layers
 - Feature content filters
 - Cartographic symbols

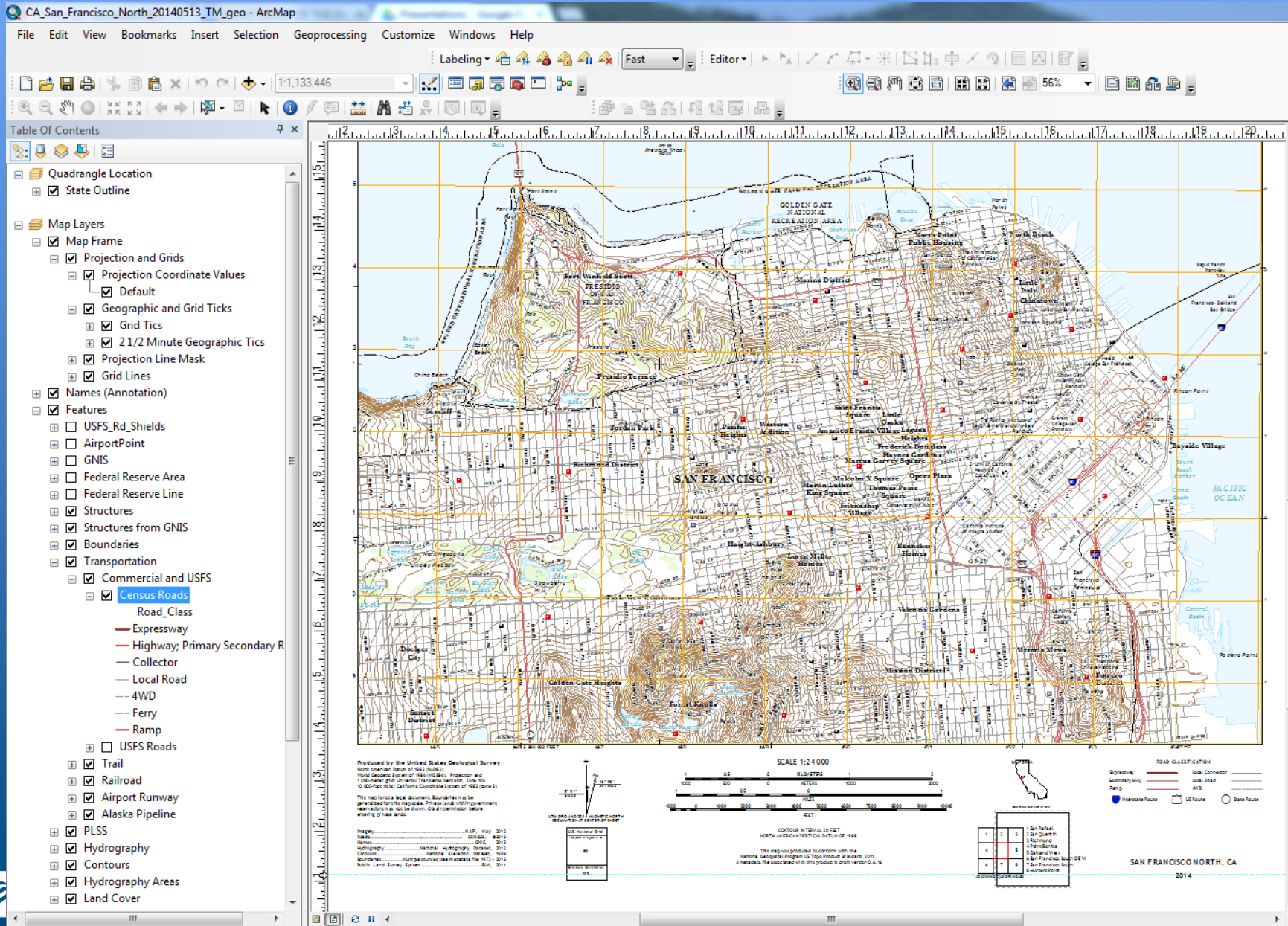
US Topo



Geologic Map



US Topo GIS Packet



Questions

Contact Info

Kristin Fishburn

USGS NGTOC

Denver, Colorado

303-202-4405

kafishburn@usgs.gov