

DIGITAL MAPPING TECHNIQUES 2024 LITE 2

The following was presented at DMT'24 Lite 2
(October 30, 2024 - A Virtual Event)

The contents of this document are provisional

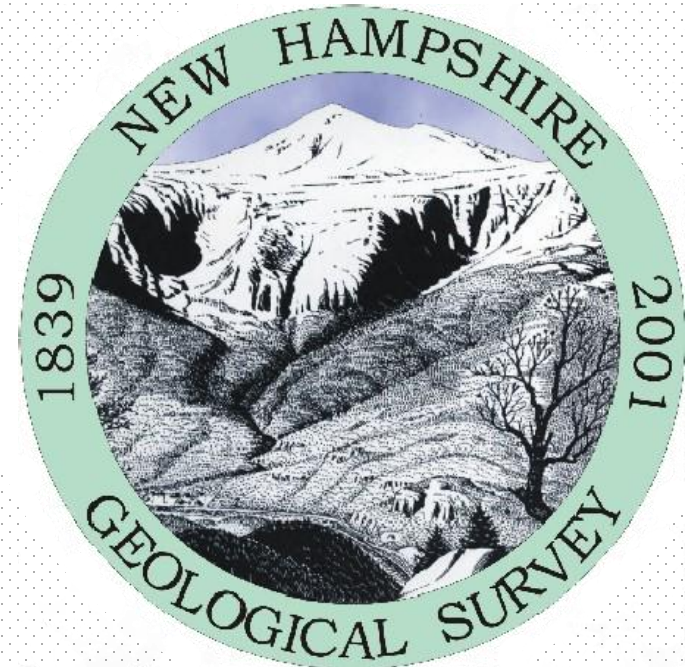
See Presentations and Proceedings
from the DMT Meetings (1997-2024)

<http://ngmdb.usgs.gov/info/dmt/>

New Hampshire Geological Survey Interactive Publication Viewer

Emily Beard

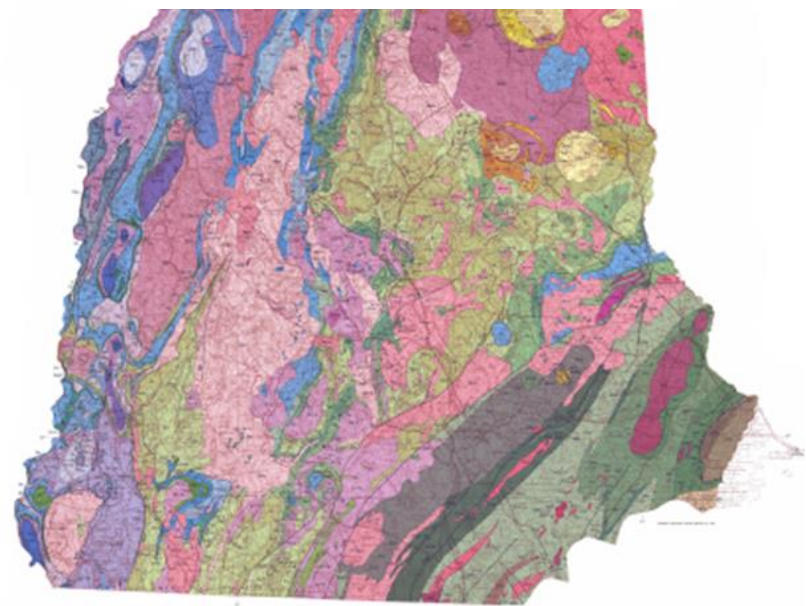
Outreach Coordinator



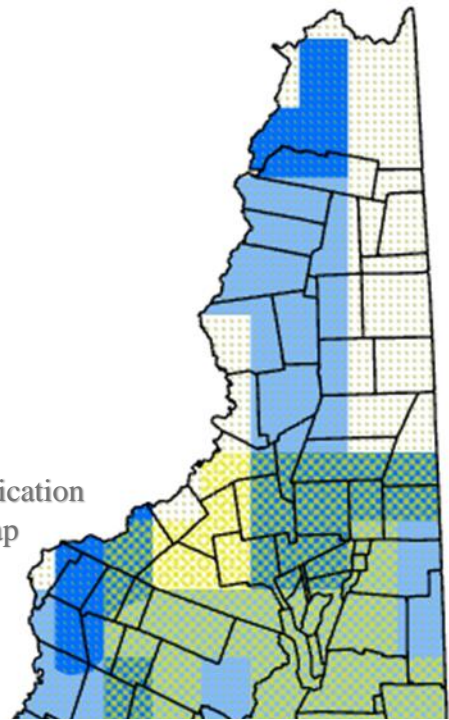
Bedrock Geologic Map of New Hampshire
Lyons, 1997



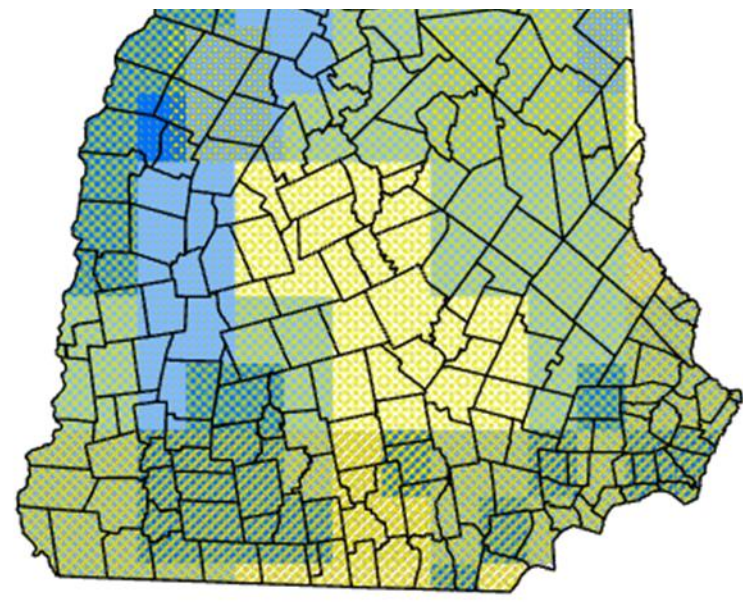
What is it?



Interactive Publication
Viewer Map



What is the purpose?



Surficial Geology of New Hampshire
Goldthwait, 1950



Who is it for?



Development

Map Archive



Publication Library



ArcGIS Pro



Experience
Builder



New Maps



Previous Outreach Coordinator(s), Rebecca LeCain



Zoom to

Name	MANC
Map Type	Surficia
Quad ID	181
100K Quad Name	LOWEL



New Hampshire Geological Survey Interactive Publication Viewer

This interactive viewer displays the current availability of surficial and bedrock geologic publications for the state of New Hampshire, published for or by the New Hampshire Geological Survey (NHGS). Publication availability varies by location and map scale. This viewer allows users to search and download maps and applicable companion documents. This information is subject to change as new publications become available.

Please note that this viewer does not contain all of the available geologic records managed by NHGS. Additional historic, cultural, and educational publications may be obtained through the NHDES Publication Viewer or by contacting our office directly.

For instructions on the use of this viewer, please see the **How to Use** panel to the left of the map. This will be visible after closing this screen.



Quad ID	100K Quad Name
3	SHERBROOKE
2	SHERBROOKE
1	SHERBROOKE